

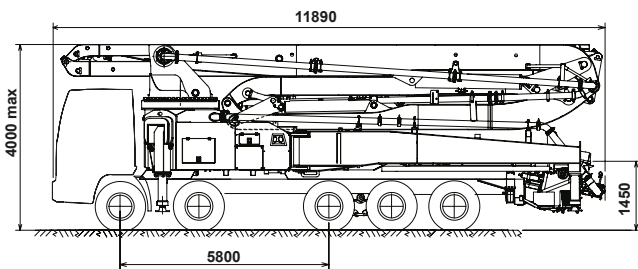
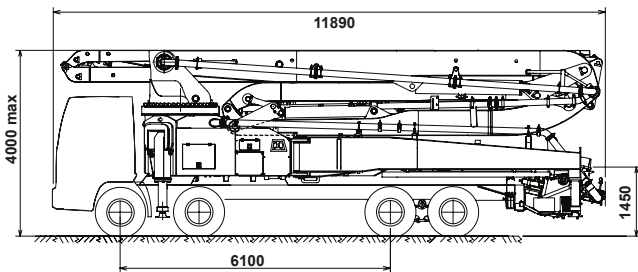
# K52L

## TRUCK-MOUNTED CONCRETE BOOM PUMP

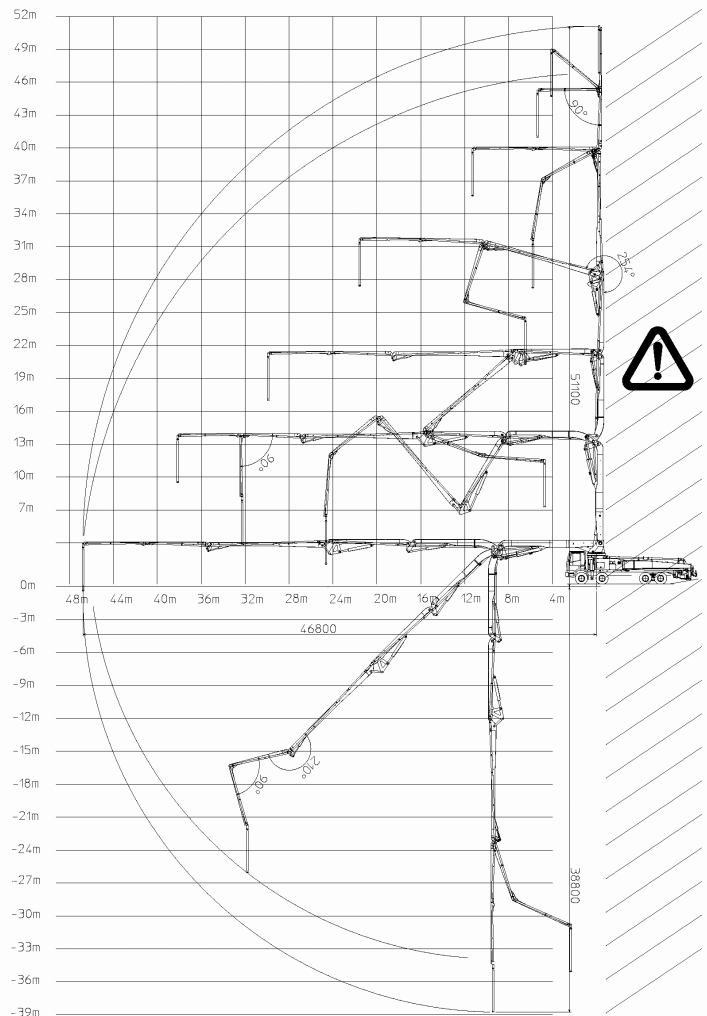
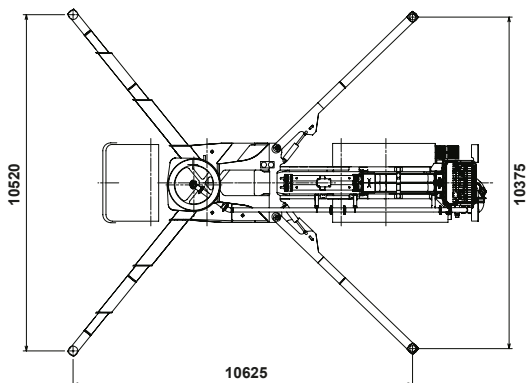
Placing boom	B6RZ 52/48
Pumping unit	HP1808ECX HP1606H
Driven by	PTO
Chassis	4-5 axles



### Dimensions



Dimensions varying according to truck assembly



## K52L

### Standard equipment

- Advantageous assembly on standard 4 and 5 axle chassis, max. length <12m
- Self-supporting frame, torsion free, FEM designed
- Placing boom B5RZ 52/48, 6 sections, pipeline diameter 125 mm, "RZ" folding system.
- Fully hydraulic outrigger controls on both sides of the truck
- Front "X style" diagonal outriggers with sequence controlled triple patented telescopic opening and swing-out rear outriggers for a quick and easy set-up
- "Load Sensing" proportional boom control for pumping unit HP-C
- "BFC" Best-Flex Cifa supporting system allowing just one man to change delivery pipeline easily, quickly and safe
- Concrete flow rate regulator
- Safety device on opening inspection hatch
- Pumping unit with closed loop (HP1808ECX) or open loop (HP1606H)
- Project conforms to Directive Machinery 2006/42/CE
- 2 Proportional radio control with two boom movement speed, synthesizer for automatic frequency search, 8 position joy stick and concrete flow rate regulator. 20 mt cable
- Double thickness concrete pipes, in high resistant steel and insert carbide chrome - CIFA Long Life Pipes
- Emergency control pad for pumping unit HP-C
- Remote controlled electric vibrator placed on the concrete hopper grid
- Centralized lubrication system for pumping unit
- Automatic oil lubrication system for pumping pistons
- Additional manual lubrication system for pumping pistons
- Hard plastic outrigger support plates with relative housing
- Rear light on hopper
- Level readers for stabilization control
- Accessories for cleaning and pipes washing
- Fiber glass hopper covering
- Emergency pumping unit kit  
(for machine with closed loop pumping unit)

### Control system

- Smartronic Silver (available only for machine with closed loop pumping unit):
  - integrated color LCD
  - counters
  - pumping unit management
  - diagnostics
  - capsense rear panel

### Main options

- ASC - Advanced Stability Control  
(available only for machine with closed loop pumping unit)
- LSC - Light Stability Control  
(available only for machine with open loop pumping unit)
- Pneumatic concrete valve - Shut-off valve
- High pressure water pump 28l / 120 bar
- Centralized lubrication system for placing boom
- Separated emergency engine kit for independent control of the concrete pumping unit, boom and water pump

### TRUCK-MOUNTED CONCRETE BOOM PUMP

Placing boom	B6RZ 52/48
Pumping unit	HP1808ECX HP1606H
Driven by	PTO
Chassis	4-5 axles

### Pumping unit technical data

Model		HP1606H	HP1808ECX
Max theoretical output	<i>m<sup>3</sup>/h</i>	160	180
Max. pressure on concrete	<i>bar</i>	53	83
Concrete cylinders (diam. x stroke)	<i>mm</i>	230x2100	260x2100
Concrete hopper capacity	<i>l</i>	550	600
Hydraulic circuit		open	closed

### Placing boom technical data

Model		B6RZ 52/48
Pipeline diameter	<i>mm</i>	125
Max. vertical reach	<i>m</i>	51,1
Max. horizontal distance	<i>m</i>	46,8
Min. unfolding height		20,9
Section numbers		6
1st section opening angle		90°
2nd section opening angle		180°
3rd section opening angle		180°
4th section opening angle		254°
5th section opening angle		210°
6th section opening angle		90°
Rotating angle		+/-270°
End hose length	<i>m</i>	3

Technical data and characteristics subject to modifications without notice

Autobomba  
**K52L**  
En  
**CAMIÓN**  
**VOLVO FM X 500 I-SHIT**



**Ficha Camión:**

Marca	:	VOLVO.
Año:	:	2017.
Modelo	:	FM X.
Nro. Motor	:	D13900515C23
Nro. Chasis	:	93KXG30G7GE837376
Nro. Vin	:	93KXG30G7GE837376
PBV	:	59.765,00 KILOS
Color	:	AMARILLO.
Combustible	:	DIESEL.
Kilometraje	:	440.762



Asunto: CAMIÓN AUTOBOMBA CIFA  
Modelo: K52L  
Cantidad: 01 unidad

Descripción Venta

ITEM	DESCRIPCION	UNIDAD	CANTIDAD	PRECIO UNITARIO USD\$	Total
1	Camión Autobomba CIFA K52L	Uni	01	250.000	250.000,00
<b>Forma de Pago:</b>				NETO	250.000,00
<b>Precio de recompra, al termino de 24 meses, es por 40% menos, del precio actual</b>				IVA 19%	47.500
				TOTAL	297.500

Al ser aceptada la oferta debe enviar orden de compra.

Empresa : GAMAN Y CIA SPA.  
Rut : 77.025.007-2  
Dirección : Los Aromos Parcela n°2  
Comuna : Padre Hurtado  
Giro : Importación y exportación de repuestos e insumos para la construcción  
Fono : +562 - 28340334  
Precio : Expresados en Dolar, mas iva.  
Plazo de entrega : Inmediata.